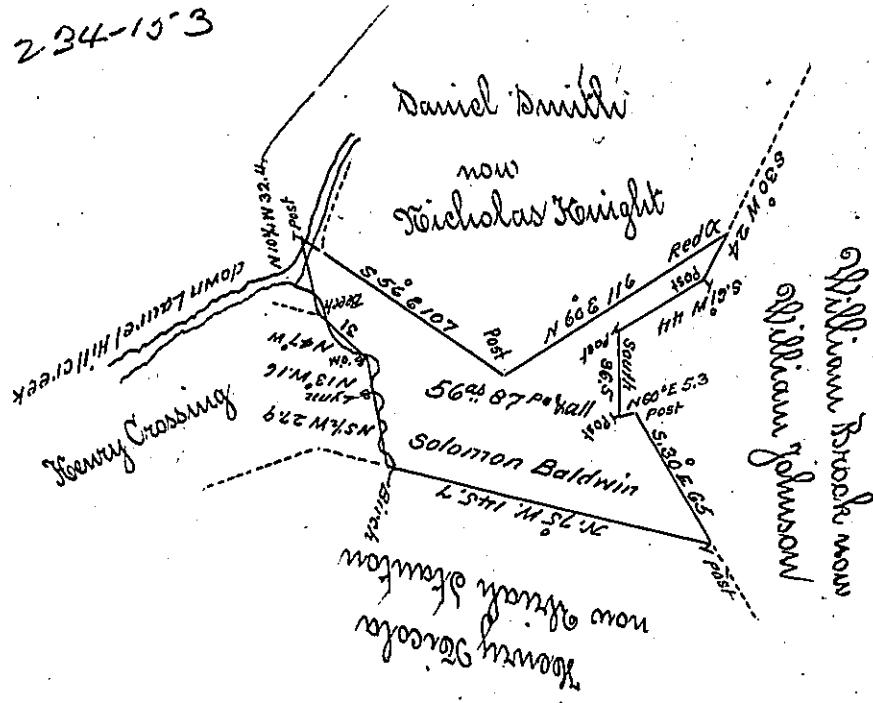


C 234-153

C 183-203



Note: the improvement first begun 1st April 1810.

Situate on the East side of Laurel Hill Creek in Keilford Township Somerset
 County including his improvement, Containing 56^{ac} 87^{po} 1/2 allowance surveyed the
 1st Day of May 1823. by Hensser Wells Esquire late Deputy Surveyor in pursuance
 of a warrant dated the 9th day of September 1822 granted to him for 50^{ac}

Certified this 30th Day of Nov^r 1824

To Gabriel Heister Esquire }
 Surveyor General of Pennsylvania }

W^m Bernard Connelly Jr
 D.S.

IN TESTIMONY that the above is a copy of the original remaining on file in
 the Department of Internal Affairs of Pennsylvania, made
 conformably to an Act of Assembly approved the 16th day of
 February, 1833, I have hereunto set my Hand and caused
 the Seal of said Department to be affixed at Harrisburg,
 this eleventh day of January 1904.

Joseph P. Brown
 Secretary of Internal Affairs.